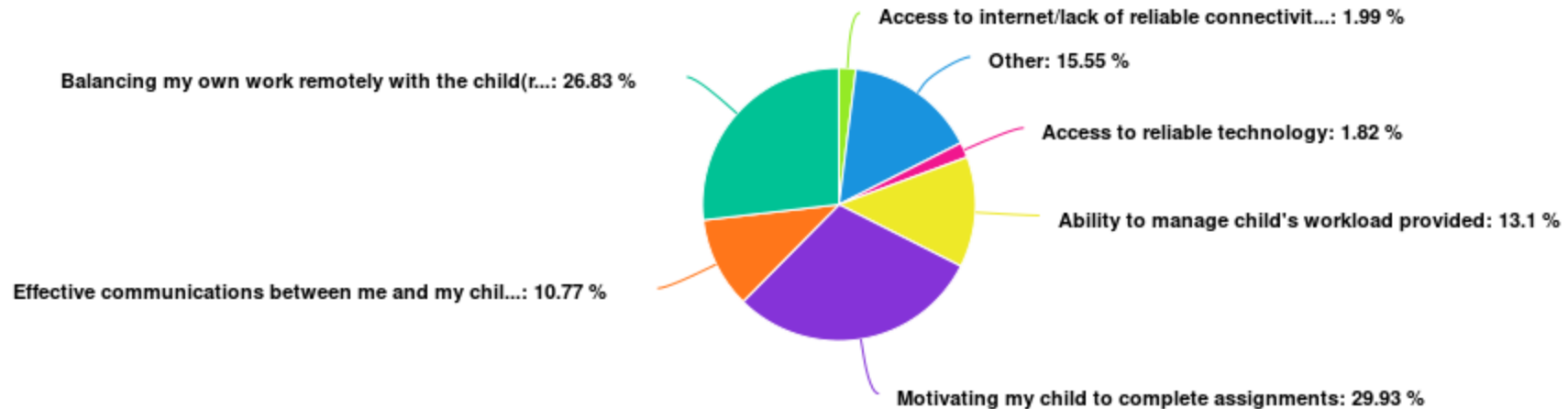
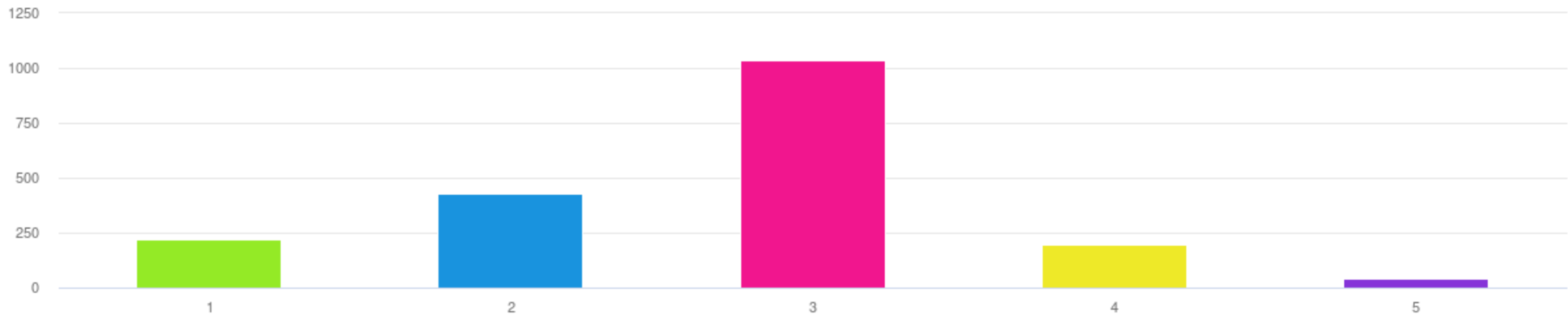


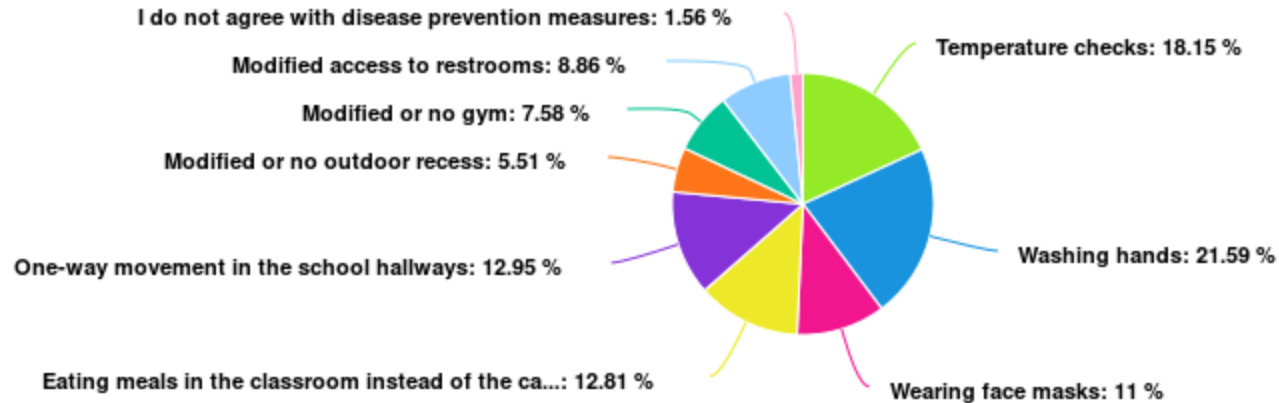
As a parent/guardian, what are you struggling with most regarding your child's experience with online learning?



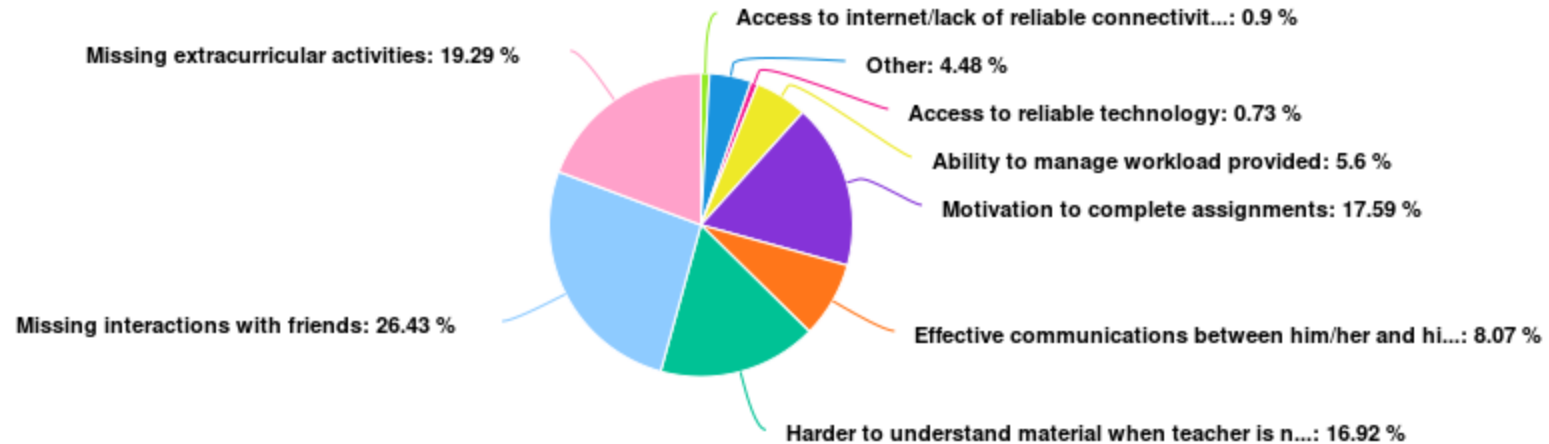
How would you rate the daily amount of work that your child is completing on average each day?



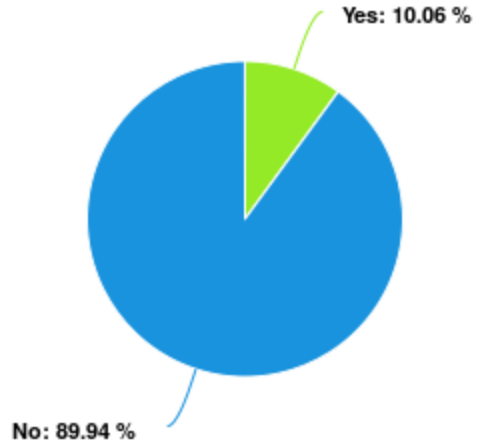
The school district is considering the following disease prevention measures. Please indicate your agreement with each option by checking the boxes below:



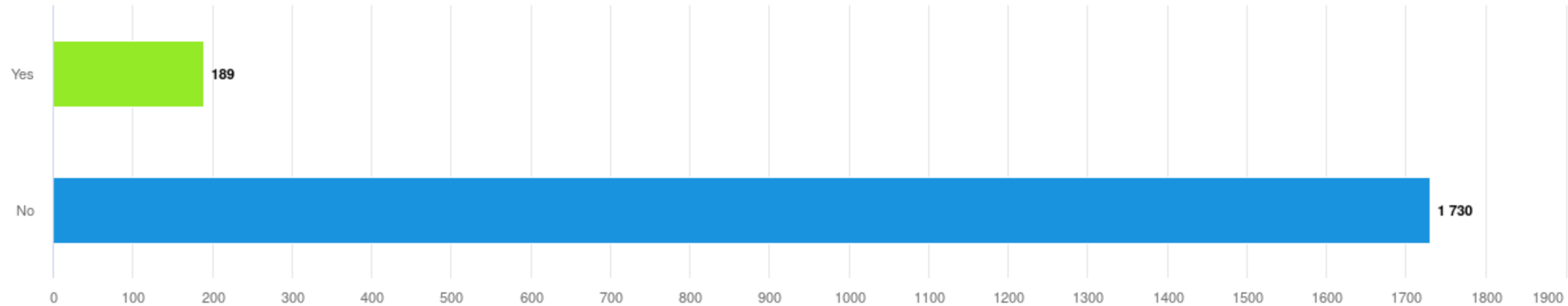
What is your child struggling with most regarding his/her experience with online learning?



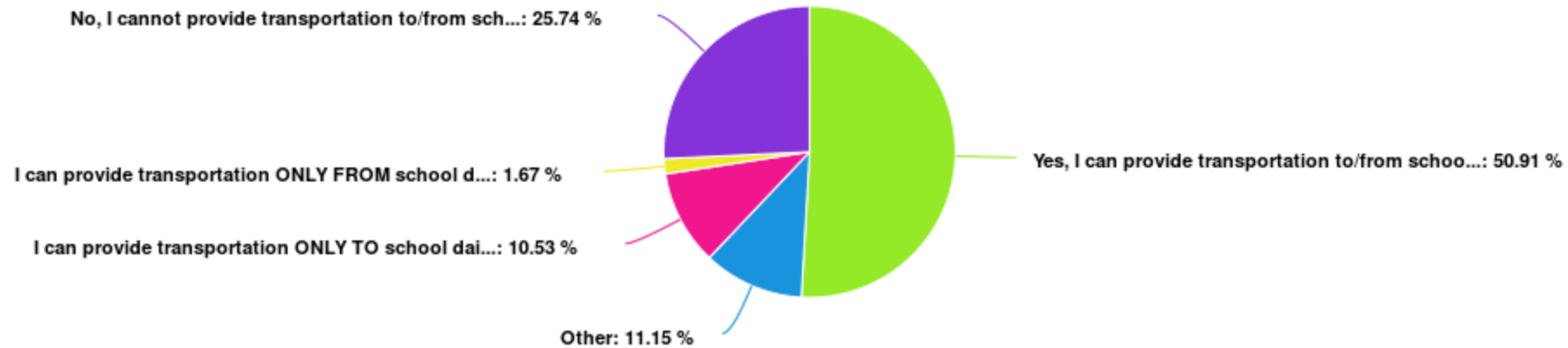
Should any form of online learning continue in the Fall of 2020, will you need a hotspot device provided to you/your family?



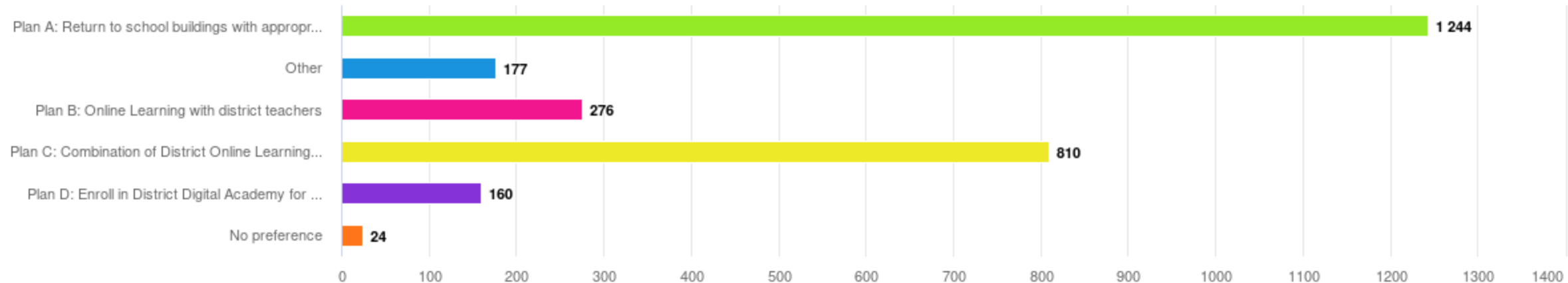
Do you or your child need assistance/training on how to access the online platforms for remote learning?



In order to implement social distancing on a school bus (should it be required), we are asking if you are able to provide transportation to/from school for your child daily

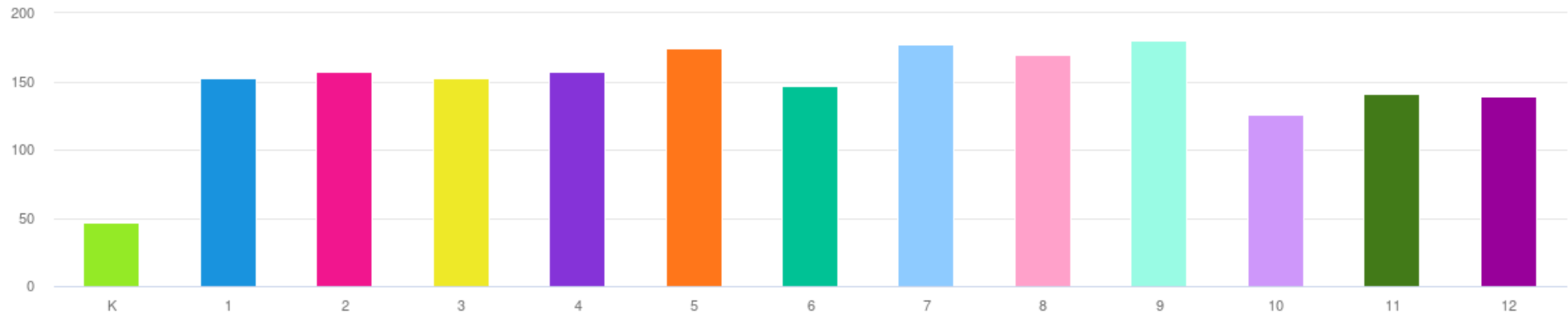


If the Fall of 2020 continues to have some safety restrictions required, which option would you choose for your child? (Select all that apply)





During the 2020-2021 school year, my child will be enrolled in:



During the 2020-2021 school year, my child will be enrolled in:

